



RockCreeke™

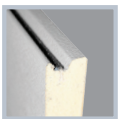
Classic Carriage House Style

RockCreeke gives you time honored styling and wood appearance without the high maintenance associated with a wood door. Your RockCreeke door starts with a high quality insulated steel door and is overlayed with a highly engineered, long-lasting vinyl capstock material, duplicating the appearance of classic wood, without the hassles of wood. With Raynor's OptiFinish™ 2-tone paint process available, choices are almost endless, giving your home a perfect match with unsurpassed curb appeal. RockCreeke is the perfect balance between unrivaled beauty and enduring quality.



Insulation

Through our innovative process, insulation fills 100% of the door's interior space. The energy-saving polyurethane core delivers an exceptional 13.0 R-value.



Thermal Protection

Thermal protection is provided by a continuous thermal break, preventing heat loss and metal-to-metal contact between inside and outside surfaces.

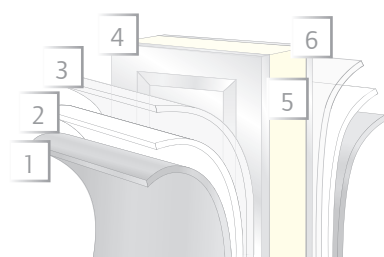


Profiles

Available in Swing-Out and Accordion style with bi-fold, A-bucks, V-bucks, and X-bucks designs.

RockCreeke™

Designed to provide unsurpassed character in a maintenance-free design, Raynor RockCreeke overlay doors feature an environmentally stable trim board material. With a long-lasting vinyl capstock, this trim board material has an attractive appearance that holds up over time. Best of all, the material technology can utilize "reclaimed" wood fiber and vinyl from post production processes, helping to save natural resources. And, with an R-value of 13.0, RockCreeke doors have durable 1-3/8" polyurethane insulated base door sections for thermal efficiency and maximum structural integrity.



1. baked-on finish
2. epoxy primer
3. galvanized layer
4. high-strength steel
5. polyurethane insulation
6. high-strength steel



RockCreeke, Swing-Out, White over Barn Red with 3 over 3 clear glass

Colors

Standard Base Colors



Standard Board Color



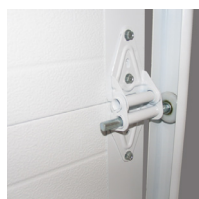
Optional

Raynor's OptiFinish paint process allows your RockCreeke door to be customized with more than 1,800 Sherwin-Williams® colors. Mix and match to achieve your perfect 2-tone door.

If overlay trim boards are painted, select a color with a Light Reflective Value (LRV) of 50 or higher for doors that receive direct sunlight (east, west or south facing). Refer to the Sherwin-Williams color chart for LRV.

Hardware Options

Interior Hardware



For a clean, finished look and maximum protection against rust, RockCreeke doors are available with a powder coated hardware system. The EnduraCote™ Hardware System features extended-life torsion springs and powder coated hardware. Nylon rollers with steel ball bearings also help to provide superior noise reduction.

Track/Hardware Finish

Standard

Galvanized

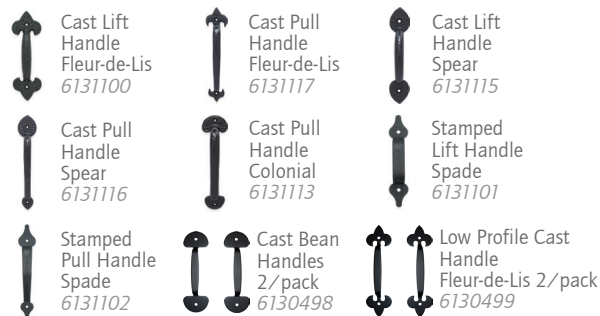
Optional

EnduraCote™ White Powder Coat

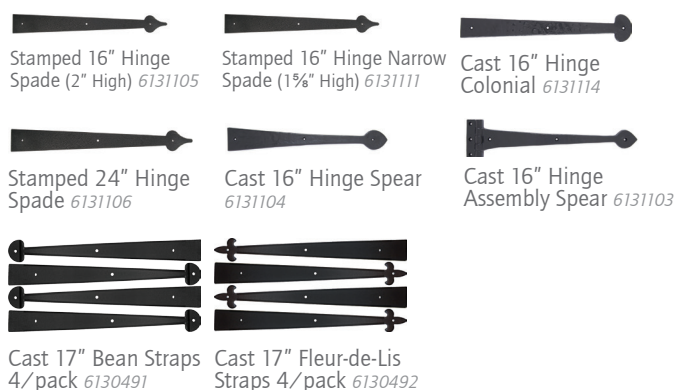
Optional Decorative Hardware

Raynor's many decorative hardware options add the finishing touches to your RockCreeke™ Door.

Handles



Straps



Door Styles and Panel Options

Door styles: Simulated Swing-Out, Bi-fold, and Accordion (12' only)

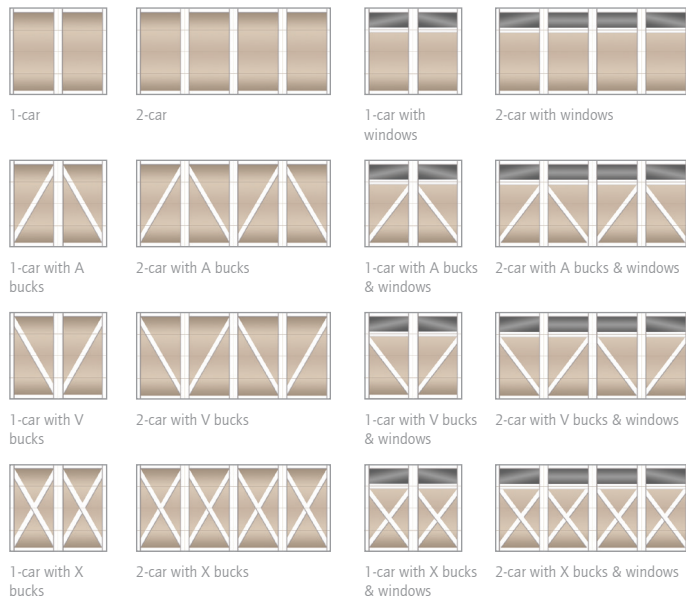
Sizes:

Heights: up to 10' in 6" increments

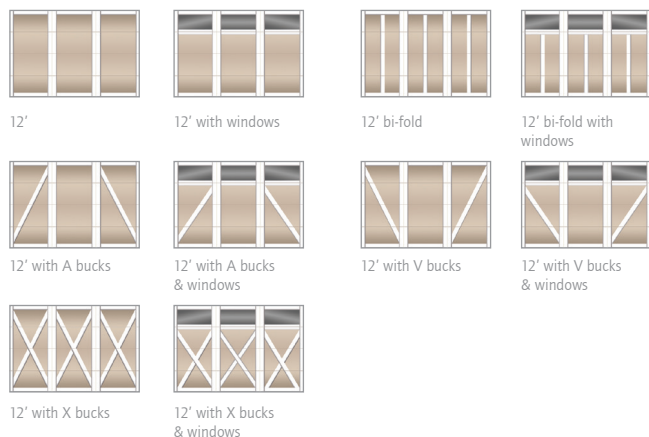
Widths: 8'0", 9'0", 10'0", 12'0", 16'0", 18'0"

(Accordion style doors only available in 12' widths)

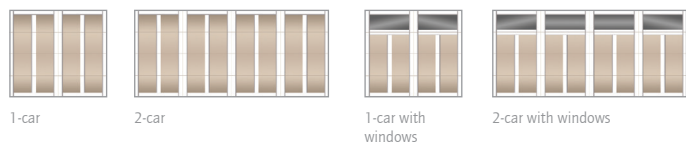
Swing-Out Single-Car and Double-Car Panel Configurations



Accordion Panel Configurations (Only Available in 12' widths)



Bi-Fold



Window Options

RockCreeke's window battens are made from an environmentally stable material that utilizes "reclaimed" wood fiber and vinyl from post-production processes and coated with a long-lasting vinyl capstock, while arches are made from industrial grade polyurethane. Battens and arches are fitted to the window and locked in place, resulting in unprecedented beauty.

Glass Type

Standard:

Clear 1/8" DSB

Optional:

Clear 1/8" Insulated

Water Glass 3/16"

Water Glass 3/16"

Insulated

Number of Lites

Across

Single Car: 2

12' Accordion: 3

Double Car: 4

Pane Pattern

1-pane, 1-pane

arched,

2 over 2

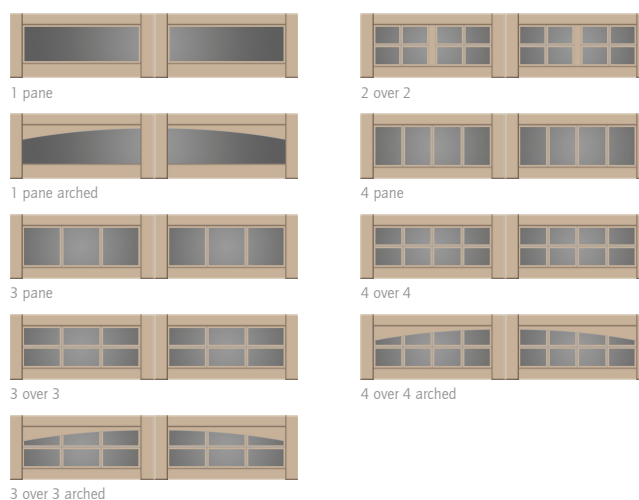
3-pane, 3 over 3,

3 over 3 pane arched,

4-pane, 4 over 4,

4 over 4 pane arched

Our beautiful window designs put the perfect finishing touch on your new Raynor RockCreeke garage door.



Standard Limited Warranty*

Door Sections

"For As Long As You Own Your Home" against rust

Trim Boards

Delamination: 5-years

Discoloration: 10-years

Hardware

EnduraCote: "For As Long As You Own Your Home" against defects in materials and workmanship

Galvanized: 6-years against defects in materials and workmanship

Springs

EnduraCote: "For As Long As You Own Your Home"

Standard: 3-years against defects in material and workmanship

**Limited Warranty: Visit www.raynor.com/products for complete Limited Warranty details.*

Unsurpassed Character in a Maintenance-free Design

The material used in the decorative overlay trim boards is a revolutionary structural composite that blends the very best attributes of vinyl and wood. Its strength and durability have been field-proven in extreme weather and environmental conditions.



Professional Installation and Service

Depend on your Raynor Dealer

When you select Raynor, you're not just getting a superior garage door - you're also getting professional garage door installation and service expertise.

Every Raynor garage door is installed by a trained Raynor professional, and that means added benefits for you. First, you won't have to deal with it yourself. Second, because it's done right the first time, your door will deliver performance and reliability from the day it's installed. Your technician will check your door for everything from safety to performance and appearance. Trust your Raynor garage door to someone who knows it better than anyone else, your professional Raynor Dealer.



P.O. Box 448, 1101 East River Rd.
Dixon, IL 61021-0448
1-800-4-RAYNOR (472-9667)

Exclusively Distributed by:

THUMB RAYNOR
GARAGE DOORS

trgd@thumbaynor.com
(810) 648-2328
1-888-729-6671